

AS-BUILT

INFORMATION PROVIDED BY:

DATE: November 30, 2006

NAME: CRANE'S CONTRACTING, INC.

ADDRESS: 345 CORPORATE WAY

ORANGE PARK, FLORIDA 32073

PHONE NO: (904) 276-1736

I HEREBY CERTIFY THAT THE

PAVEMENT

CURB AND GUTTER

STORMWATER DRAINAGE

SYSTEM

UNDERDRAIN CONNECTIONS

X

X

X

X

X

WATERMAIN

SANITARY SYSTEM

FORCE MAIN

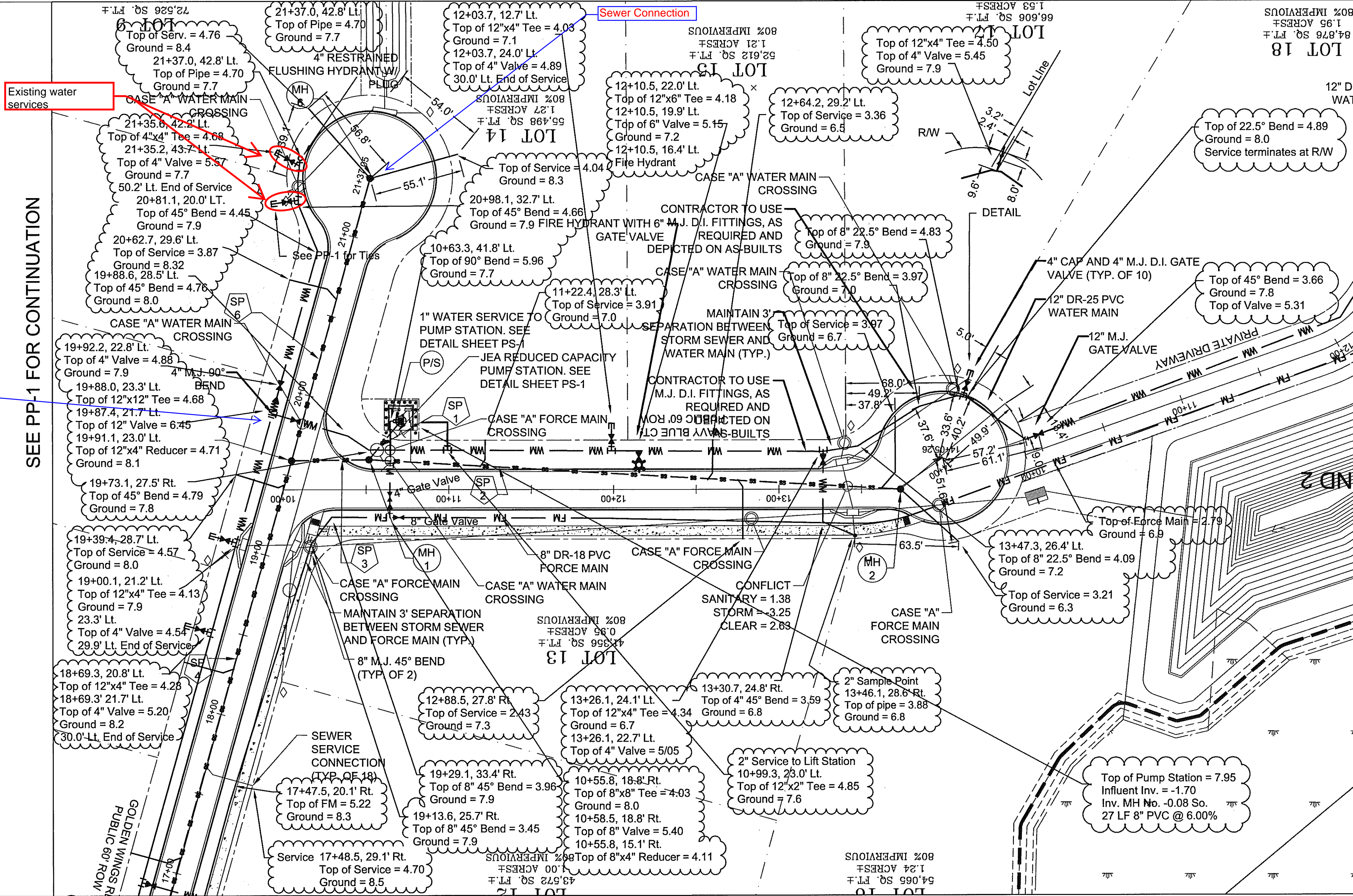
LIFT STATION

POND

ARE IN ACCORDANCE WITH THE APPROVED PLANS AND CITY SPECIFICATIONS UNLESS OTHERWISE APPROVED BY THE CITY ENGINEER.

AUTHORIZED SIGNATURE

CONTRACTOR



SEE PP-1 FOR CONTINUATION

SEE PP-3 FOR CONTINUATION



AS-BUILT

INFORMATION PROVIDED BY:

DATE: November 30, 2006

NAME: ELAND & ASSOCIATES, INC.

ADDRESS: 615 BLANDING BOULEVARD

ORANGE PARK, FLORIDA 32065

PHONE NO: 904-272-1000

I HEREBY CERTIFY THAT THE

PAVEMENT

CURB AND GUTTER

STORMWATER DRAINAGE

SYSTEM

UNDERDRAIN CONNECTIONS

X

X

X

X

X

WATERMAIN

SANITARY SYSTEM

FORCE MAIN

LIFT STATION

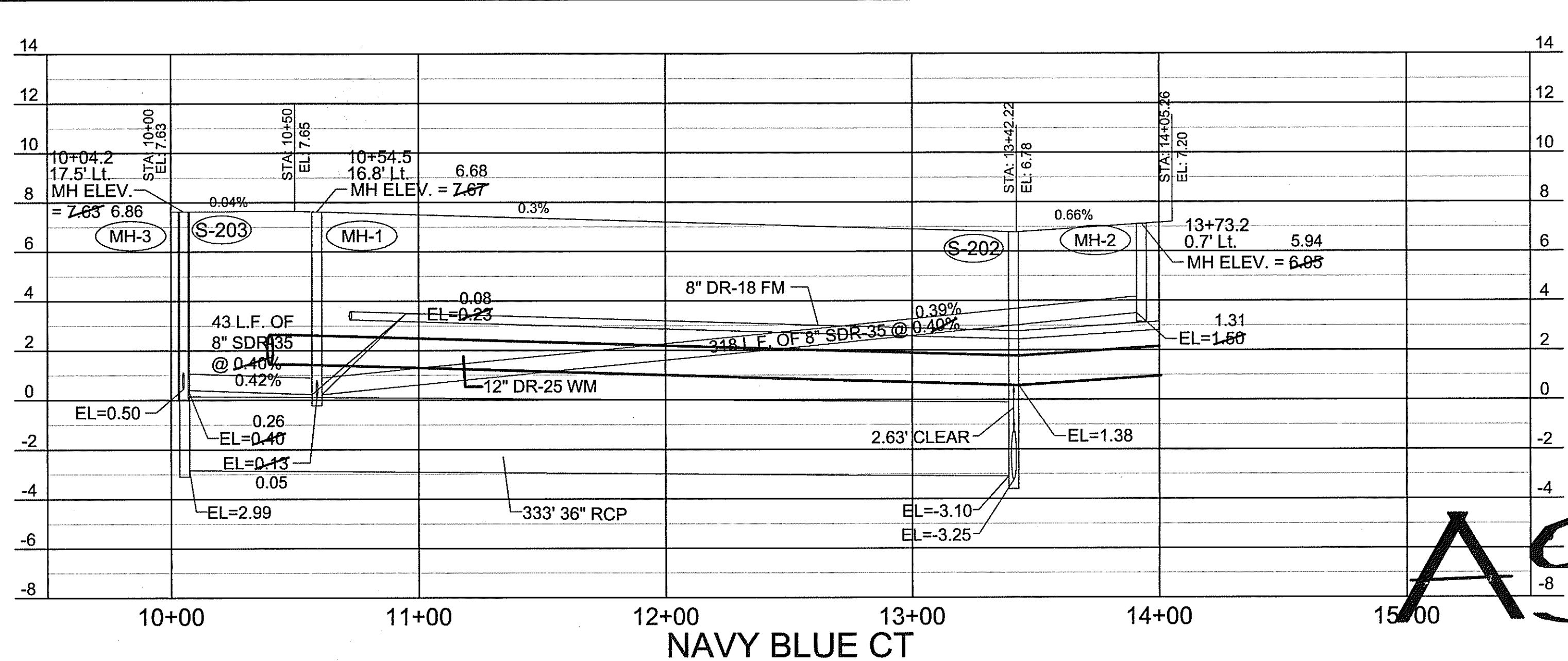
POND

ARE AT THE HORIZONTAL AND VERTICAL LOCATIONS AS SHOWN ON THESE 'AS-BUILT' DRAWINGS AND MEET THE MINIMAL TECHNICAL STANDARDS SET FORTH BY THE FLORIDA BOARD OF LAND SURVEYORS PURSUANT TO SECTION 472.027, FLORIDA STATUTES.

SIGNATURE: *[Signature]*

DATE: November 30, 2006

FLORIDA REG. LAND SURVEYOR'S NO: LS 2518



AS-BUILT APPROVED  
OCT 05 2007  
JEA

AS-BUILT

CONSTRUCTION PLANS FOR  
NAS COMMERCIAL PARK  
JACKSONVILLE, FLORIDA

SCALE: 1"=40'

DESIGNED BY: KMD

DRAWN BY: JBB

CHECKED BY:

PLAN AND PROFILE  
PLAN

CONSTRUCTION  
FOR

DRMP

ENGINEERS - SURVEYORS - PLANNERS - SCIENTIST

CONSULTING ENGINEERS - CERT. OF AUTH. #2548

3815-14 ST. JOHNS BLUFF RD. S.

JACKSONVILLE, FLORIDA 32224

(904) 963-6900

DRAWING

PP-2

11 OF 53

DATE: JULY, 2006

PROJECT NO.: 06-0583.000

RELEASED FOR CONSTRUCTION

NOT

DO NOT SCALE THIS DRAWING - DIMENSIONS AND NOTES TAKE PREFERENCE

REGISTERED ENGINEER  
KEVIN W. PORTER  
FL #48894